

# **Fort Atkinson High School ACT Results**

## **Class of 2013**

**Report to the Board of Education**

# General ACT Information

## NATIONAL

- Curriculum-Based Achievement Exam
- Measures Academic Skills
  - Taught in High Schools
  - Deemed Important for College Success
- Scores 1 to 36
- Administered in all 50 states
- Accepted by All Major Colleges and Universities
- Cost: \$45 without writing; \$50 with

# What's on the Test?

<b>English</b> <b>75 Questions</b> <b>45 Minutes</b>	<b>Usage/Mechanics</b> Editing Text for grammar and mechanics <b>Rhetorical Skills</b> Revision of Text for style, word choice, organization Does not include Spelling, Vocabulary or Rote Grammar Skills
<b>Math</b> <b>60 Questions</b> <b>60 Minutes</b>  Multiple Choice Calculator Allowed	<b>Pre / Elem. Algebra</b> <b>Algebra / Cord-Geometry</b> <b>Plane Geometry / Trigonometry</b>

# [ What's on the Test? ]

## **Reading**

**40 Questions**

**35 Minutes**

**SS & Science (Nonfiction)**

**Art & Literature (Fiction)**

Measures ability to derive meaning from texts by referring to what is explicitly stated and reasoning to determine implicit meanings.

## **Science**

**40 Questions**

**35 Minutes**

**Data Representation**

**Research Summaries**

**Conflicting Viewpoints**

# [Fort Atkinson High School Profile of Class of 2013

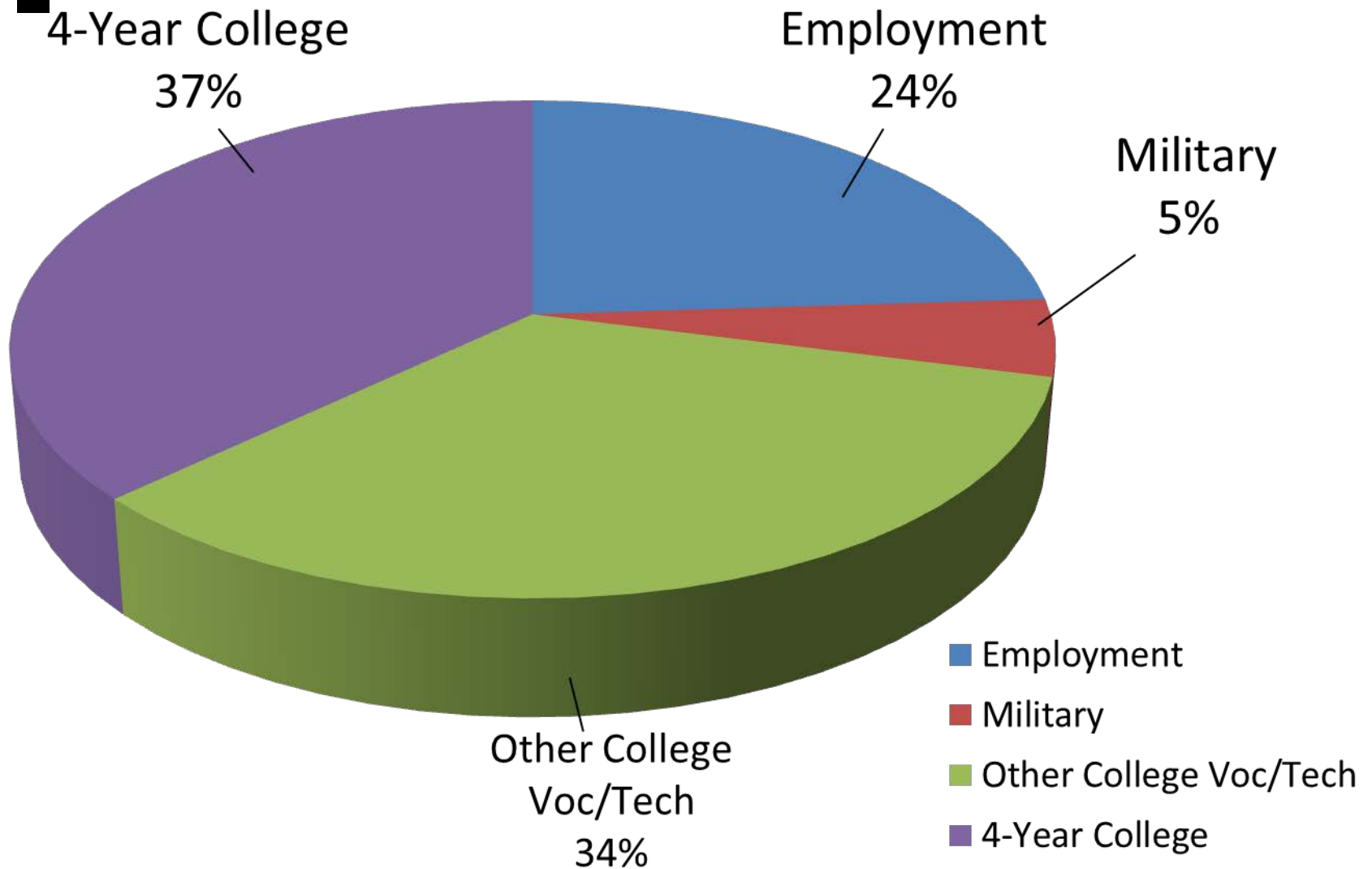
- **Total Test takers**                      **117 (44.7%)**
- **Female**                                      **64 (54.7%)**
- **Male**                                        **53 (45.3%)**



# Participation Rates

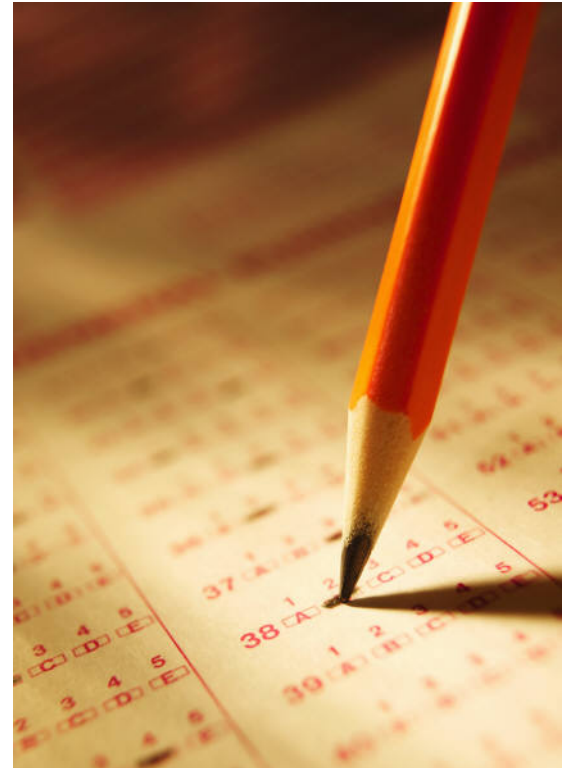
Class of	Test Takers	% of Class
2003	160 / 249	64%
2004	159 / 241	66%
2005	128 / 212	60%
2006	138 / 206	67%
2007	116 / 198	59%
2008	134 / 264	51%
2009	114 / 233	49%
2010	133 / 239	56%
2011	137 / 253	54%
2012	119 / 230	52%
2013	117 / 262	44.7%

# Class of 2013 Post Graduate Intentions



# [ ACT Composite Score Class of 2013 ]

- Local 22.2
- State 22.1
- National 20.9





# Longitudinal Composite Scores

---

	<u>Local</u>	<u>State</u>	<u>National</u>
02-03	22.1	22.2	20.8
03-04	21.4	22.2	20.9
04-05	22.1	22.2	20.9
05-06	21.4	22.2	21.1
06-07	22.8	22.3	21.2
07-08	23.1	22.3	21.1
08-09	23.1	22.3	21.1
09-10	23.5	22.1	21.0
10-11	22.4	22.2	21.1
11-12	22.7	22.1	21.1
12-13	22.2	22.1	20.9

# Average Score by Subject

## Total Group - 2013

	Local	State	Nation
English	21.4	21.5	20.2
Math	21.5	22.0	20.9
Reading	23.2	22.3	21.1
Science	22.4	22.2	20.7

## ENGLISH: Sub Score Comparisons

Class of ...	LOCAL	Difference Local & State	STATE	NATION
2003	21.0	-0.3	21.3	20.3
2004	20.2	-1.3	21.5	20.4
2005	21.5	SAME	21.5	20.4
2006	20.7	-0.8	21.5	20.6
2007	22.1	+0.5	21.6	20.7
2008	22.3	+0.6	21.7	20.6
2009	22.4	+0.7	21.7	20.6
2010	23.0	+1.5	21.5	20.5
2011	21.6	SAME	21.6	20.6
2012	22.4	+0.9	21.5	20.5
<b>2013</b>	<b>21.4</b>	<b>-0.1</b>	<b>21.5</b>	<b>20.2</b>

## MATH: Sub Score Comparisons

Class of ...	LOCAL	Difference Local & State	STATE	NATION
2003	21.5	-0.6	22.1	20.6
2004	21.1	-1.0	22.1	20.7
2005	21.6	-0.4	22.0	20.7
2006	20.7	-1.3	22.0	20.8
2007	21.4	-0.8	22.2	21.0
2008	22.8	+0.5	22.3	21.0
2009	22.6	+0.4	22.2	21.0
2010	23.1	+1.1	22.0	21.0
2011	22.4	+0.3	22.1	21.1
2012	21.9	-0.1	22.0	21.1
<b>2013</b>	<b>21.5</b>	<b>-0.5</b>	<b>22.0</b>	<b>20.9</b>

## READING: Sub Score Comparisons

Class of ...	LOCAL	Difference Local & State	STATE	NATION
2003	22.8	+0.4	22.4	21.2
2004	22.0	-0.5	22.5	21.3
2005	22.3	-0.1	22.4	21.3
2006	21.8	-0.6	22.4	21.4
2007	23.8	+1.4	22.4	21.5
2008	23.4	+0.8	22.6	21.4
2009	23.4	+0.8	22.6	21.4
2010	24.0	+1.7	22.3	21.3
2011	22.4	+0.2	22.2	21.3
2012	23.4	+1.3	22.1	21.3
<b>2013</b>	<b>23.2</b>	<b>+0.9</b>	<b>22.3</b>	<b>21.1</b>

# SCIENCE: Sub Score Comparison

Class of ...	LOCAL	Difference Local & State	STATE	NATION
2003	22.6	+0.3	22.3	20.8
2004	21.8	-0.4	22.2	20.9
2005	22.6	+0.3	22.3	20.9
2006	22.0	-0.2	22.2	20.9
2007	23.1	+0.7	22.4	21.0
2008	23.1	+0.8	22.3	20.8
2009	23.3	+1.0	22.3	20.9
2010	23.5	+1.3	22.2	20.9
2011	22.7	+0.4	22.3	20.9
2012	22.6	+0.5	22.1	20.9
<b>2013</b>	<b>22.4</b>	<b>+0.2</b>	<b>22.2</b>	<b>20.7</b>

# ACT Benchmark Scores

College Course	ACT Test	Benchmark Score
English Composition	English	18
College Algebra	Mathematics	22
Social Sciences	Reading	21
College Biology	Science	24

# Percent of 2013 ACT-Tested Students Meeting Benchmark Scores

	FAHS	State	Nation
English Composition	79	75	64
College Algebra	52	54	44
Social Science	62	53	44
College Biology	50	47	36
All 4 Areas	37	33	26



## Percent of Students Meeting Benchmark Score

# ALL FOUR AREAS

<b>Grad Year</b> “Class of...”	<b>LOCAL</b>	<b>STATE</b>
2004	23	29
2005	27	28
2006	28	28
2007	33	29
2008	34	30
2009	37	30
2010	38	31
2011	30	32
2012	33	31
<b>2013</b>	<b>37</b>	<b>33</b>

# Optional Writing Section

- Since 2005, students have had the option to participate – Not mandatory for 2013
- Tests ability to construct an effective essay responding to a prompt
- **61 out of our 117** took the writing test (**52%**)
- Average FAHS student score was **6.9** out of possible 12 on the pilot
- State average 7.2 out of 12
- Scores reported separately, not part of composite score

# [ English & Writing Scores ]

	<b>FAHS</b>	<b>State</b>
English	<b>22.3</b>	23.4
Essay	<b>6.9</b>	7.2
English/ Writing	<b>21.2</b>	22.3

# [ Top Schools ]

Receiving ACT info from Fort Students

<b>UW Whitewater</b>	30 Students
<b>UW Madison</b>	23 Students
<b>UW La Crosse</b>	15 Students
<b>UW Oshkosh</b>	15 Students
<b>UW Milwaukee</b>	12 Students
<b>UW Platteville</b>	10 Students
<b>UW Stevens Point</b>	8 Students
<b>Carroll University</b>	7 Students
<b>UW Green Bay</b>	7 Students
<b>UW Eau Claire</b>	5 Students

[ QUESTIONS

---

]